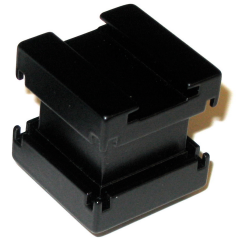


AIS-CUBE

Active Interface Shoe to Universal Shoe Adapter Assembly and Use Instructions

Description

These adapters are designed to allow the use of standard cold shoe devices on Sony's Camcorders that use the Active Interface Shoe (AIS). AIS should not be confused with Sony's Intelligent Accessory Shoe (IAS). If you have a camcorder or camera with IAS, please use the UNI-CUBE adapter instead.



Contents

Included in the package should be the assembled adapter as ordered and adjusting washers.

Compatibility

The AIS-CUBE and AIS-FLAT models have been tested to work on these Sony camcorder models:

HDR-HC1	HVR-A1	HDR-HC3	HDR-HC5
HDR-HC7	HDR-SR1	HDR-UX1	HDR-UX5

Many other Sony brand camcorders are compatible but have not been tested. To make a compatibility or incompatibility report, please email compat@dm-accessories.com.

Handling

When working with this or any other camera or camcorder, be sure to handle them gently. Camcorders have precise internal components that may be damaged when handled improperly. Consult the camcorder's manual for details.

While working with the the camcorder at a table or bench, placing it on on a soft, clean pad or towel is a good idea. Using excessive force may damage parts. If screws or parts bind such that they don't turn, stop, back up and check to be sure it is aligned.

Installation

The adapter is shipped pre-assembled. It does not need to be taken apart, and should not be taken apart in normal use to avoid losing the post and washers.

Note on the adapter that there is an "H" base on the bottom. That base is to be inserted into the Active Interface Shoe, with the base's flat edges to the back and front. Insert the base with the bottom flat to the AIS socket. The front tabs drop down into the notches of the AIS shoe, the rear base tabs drop behind the AIS shoe. Then, slide the adapter forward and turn the top block clockwise. Tighten the top block by hand strength only. Test the mounting before use, the adapter should not wobble or shake. If it does. loosen the block a little and tighten again. If the adapter does not tighten parallel to the camera, use the included spacer kit, which includes washers of several thicknesses. Instructions are on the spacer kit bag.



Open the AIS cover



Insert 'H' base into the AIS socket. Shown as bare base for illustration, disassembly is not needed.



Slide forward. Turn the top clockwise and tighten by hand only. Top is not shown.

Mounting Accessories

Slide the accessory device into the shoe, then tighten securely with hand force only. Shown is a Bescor LED light on the AIS-CUBE. The AIS-CUBE offers as many as five mount points, but the user should consider the strain on the camera's shoe mount. Consider the camera balance and do not mount an excessive number of devices or excessively heavy devices to the AIS-CUBE.



Adjustment

If the tension on the adapter is too loose or too tight, use the enclosed adjustment washers. They are made of varying thicknesses of plastic to adjust the tension under the shoe mount. Follow the instructions on the washer packet. If the adapter is to be semi-permanent, consider using a drop of low or medium strength, service removable, thread locking liquid on the threads of the shoe mount. Be careful not to use too much thread locking liquid or spill it. Thread locking liquid can be found at auto parts stores.

Maintenance

Clean with a soft cloth, dry or lightly damp if the adapter gets dirty. If using any liquids, be sure that the adapter is completely dry before attaching it to the camera again. Do not use harsh cleaners.

Parts

Should any of the parts get lost or damaged, please email parts@dm-accessories.com for information on getting replacement parts.



DM Accessories
4833 Cherry Valley RD
Middleville MI 49333
USA

<http://www.dm-accessories.com>
sales@dm-accessories.com

Adapter design and instructions ©2006-07 DM-Accessories. Adapter and camcorder compatibility list is not necessarily an endorsement of any particular brand or product. All trademarks and copyrights are property of their respective owners.